



glowble
LIGHTING



Commercial & Industrial

EF Series

LED Luminaires



Glowble EF Series: Tough Lights for Tough Conditions

Proudly designed, engineered, machined assembled, and supported in the USA with US and imported parts, Glowble EF Series LED fixtures are built tough to deliver optimum performance in rugged conditions. Patented heat dissipating technology allows Glowble EF Series fixtures to perform at 100% of stated output levels in ambient temperatures up to 150°F. Each fixture's exterior is a rugged extruded and machined aluminum housing, creating a durable lighting fixture that will last for years. Simply put, if you want a LED fixture that will last, the Glowble EF-Series is the right choice for you.

Glowble EF Series Fixtures have many applications including but not limited to the following areas:

- High Bay Lighting Up to 120ft
- Low Bay Lighting of Any Height
- Parking Deck Lighting
- High Heat Environments
- Exterior and Interior Wall Pack Lighting
- Areas where Maintenance is costly to perform

Certified For Performance:



Glowble EF Series fixtures have been subjected to 3rd party testing and certification to validate the incredible performance you will receive. Glowble EF Series fixtures have been tested by Intertek and have received their ETL mark as proof of our products compliance to the following North American safety standards:

- UL8750
- UL1598
- CSA C22.2 #250 standard

Often, there are energy savings rebates available to end users who upgrade from conventional lighting products to LED fixtures. DLC classification is typically a qualifying factor for those offering rebates. Glowble EF Series fixtures have received the DLC Premium Classification.

In addition to our ETL certifications and DLC Premium Listing, the Glowble EF Series family is also listed in the U.S. Department of Energy's Lighting Facts publication.



made in the USA
with US & imported parts





EF Series LED Fixtures: Engineered to be the Best

There are several LED fixture options available on the market today, across several price points. At Glowble Lighting we are exclusively focused on providing the best commercial and industrial fixtures available. With our first products created almost a decade ago and still in operation, Glowble Lighting was one of the first companies in the marketplace totally devoted to Commercial and Industrial LED Lighting. Over the past 10 years our in-house engineering and design team has continued to refine and increase our product offerings to be the best available. Our first generation lights were producing 60 Lumens / Watt and our latest engineering efforts have allowed us to now offer fixtures using high quality 162 Lumen / Watt or greater LEDs. Part of Glowble's mission statement is to be an industry leader in introducing improvement in LED Lighting Technology to the marketplace.

Glowble's premium EF Series fixtures are designed for a long life. Many LED manufacturers choose to create a fixture that runs a tremendous amount of drive current through the LEDs to create the maximum amount of light possible. This type of design & operation can cause undue stress on all components of the LED fixture and lead to premature failure. At Glowble, we have designed our EF-Series fixtures to run at optional drive currents of either 400 milliamps (Standard "SO" Output) or 600 (High "HO" Output) milliamps of drive current. This accomplishes two goals: 1.) Keeping the LED junction temperatures cooler, which equals greater life, and 2.) Creating a fixture that operates at a high efficiency point in regard to light output versus power consumption. At Glowble we realize that customers want to maximize their return on investment (ROI) when upgrading their lighting systems. Based upon our EF Series design we believe that our products will return one of the best ROIs of any commercial and industrial LED product you consider.

Built to Meet Your Specific Need:

Glowble EF Series fixtures are designed to meet your specific need for your unique application. Because the EF Series LED lighting is a modular platform, we can configure our product to your specific need. You tell us the application, and how much light you want in a specific area and we can help you get the best lighting solution possible. We have a full array of IES files that we can either provide to you or calculate for you, which shows how the best EF Series configuration will perform in your application.

Glowble EF Series fixtures are also available for order with the following additional options:

- Dimming capabilities
- Photo Cells for Light Harvesting
- External Control Option including Wi-Fi and Cellular Network Control

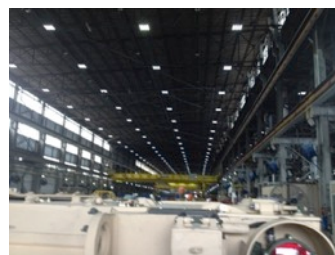
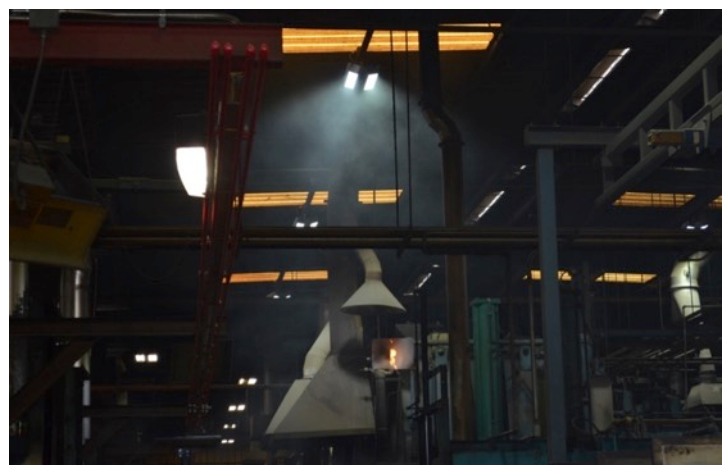
When it is time to install the product, don't worry; we have you covered there as well. Glowble EF Series LED fixtures can be configured at the factory to be ready for instant installation on sight. Options that we can customize for you include:

- Cord Length and Plug (if needed)
- Eye Bolt and J Bolt Hardware
- Pole Mounts; Slip Fitter Mounts; Trunnion Mounts; Pendant Mounts
- Wall Pack Configuration
- Custom Mount Design (when feasible)

Glowble EF-Series Lights at Work:

Successful Industry Applications include:

- Steel Mills and Foundries
- Major Automotive Manufacturers and Associated Tier Suppliers
- Municipal, Commercial, & Retail Parking Decks
- Power Generation Facilities, Crew Quarters and Sub-Stations
- Military Bases
- Cold Storage Facilities
- Heat Treating Facilities
- Food Processing Plants
- Poultry Farms
- Fast Food Industry
- School and Athletic Facilities
- Various Industrial Manufacturing Facilities & Exterior Lighting
- Various Commercial Warehouse Facilities
- Construction Sites
- Shafts, Tunnels, and Mining Operations



Glowble EF Series LED Fixtures

Model Options:



EF-040N



EF-040N

- Great for Manufacturing and Warehouse Low Bay Lighting as well as Task and Workspace lighting. Suggested mounting height range of 7 to 35ft. (Depending upon lighting Grid / Number of units used – See [Glowble Foot-Candle Chart](#) on Page 14 for sample light output results)
- Replaces a traditional 175W to 250W MH and only uses 43 or 63 Watts of Power based upon the (SO/HO) output level chosen/ordered. (See the [Glowble EF-Series Quick Reference Guide](#) on Page 13 for a table containing all critical fixture Performance Data)
- Produces 6,700 or 9,200 Lumens dependent upon the (SO/HO) output level chosen/ordered. (±10% variance)
- L90 Lumen maintenance in Hours (Per IES TM-21 Testing): 84,700 Hours
- Light Color: 5,500 Kelvin (±100)
- Dimensions: 12"x7"x4"; Weight: 7lbs
- Input voltage of: 120-277V with 4KA Suppression or ... 347-510V with 20KA Suppression Vac 50/60 Hz Also compatible with 100-250 VDC
- .98 Minimum Input Power Factor

EF-040N (With Optics)



EF-040N (With Secondary Optics)

- Great for Parking Decks, Low Ceilings and areas where maximum light disbursement is sought. Suggested mounting height range of 7 to 14ft. (Depending upon lighting Grid / Number of units used – Please request [Glowble's specific cut sheet regarding this product for foot-candle estimates.](#))
- Replaces a traditional 175W to 250W MH and only uses 43 or 63 Watts of Power based upon the (SO/HO) output level chosen/ordered. (See the [Glowble EF-Series Quick Reference Guide](#) on Page 13 for a table containing all critical fixture Performance Data)
- Produces 6,700 or 9,200 Lumens dependent upon the (SO/HO) output level chosen/ordered. (±10% variance)
- L90 Lumen maintenance in Hours (Per IES TM-21 Testing): 84,700 Hours
- Light Color: 5,500 Kelvin (±100)
- Dimensions: 12"x7"x4"; Weight: 7lbs
- Input voltage of: 120-277V with 4KA Suppression or ... 347-510V with 20KA Suppression Vac 50/60 Hz Also compatible with 100-250 VDC
- .98 Minimum Input Power Factor

EF-040WP



EF-040WP

- Perfect for Exterior and Interior Wall Mounted illumination. Suggested mounting height range of 10 to 20ft.
- Replaces a traditional 175W to 250W MH and only uses 43 or 63 Watts of Power based upon the (SO/HO) output level chosen/ordered. (See the [Glowble EF-Series Quick Reference Guide](#) on Page 13 for a table containing all critical fixture Performance Data)
- Produces 6,700 or 9,200 Lumens dependent upon the (SO/HO) output level chosen/ordered. (±10% variance)
- L90 Lumen maintenance in Hours (Per IES TM-21 Testing): 84,700 Hours
- Light Color: 5,500 Kelvin (±100)
- Dimensions: 12"x7.5"x7.5"; Weight: 8lbs
- Input voltage of: 120-277V with 4KA Suppression or ... 347-510V with 20KA Suppression Vac 50/60 Hz Also compatible with 100-250 VDC
- .98 Minimum Input Power Factor

Glowble EF Series LED Fixtures

Model Options:



EF-080N



EF-080N

- Great for Manufacturing and Warehouse Low Bay Lighting as well as Task and Workspace lighting. Suggested mounting height range of 10 to 40ft. (Depending upon lighting Grid / Number of units used – See [Glowble Foot-Candle Chart](#) on Page 14 for sample light output results)
- Replaces a traditional 250W to 400W MH and only uses 85 or 126 Watts of Power based upon the (SO/HO) output level chosen/ordered. (See the [Glowble EF-Series Quick Reference Guide](#) on Page 13 for a table containing all critical fixture Performance Data)
- Produces 13,400 or 18,400 Lumens dependent upon the (SO/HO) output level chosen/ordered. (±10% variance)
- L90 Lumen maintenance in Hours (Per IES TM-21 Testing): 84,700 Hours
- Light Color: 5,500 Kelvin (±100)
- Dimensions: 24"x7"x4"; Weight: 14lbs
- Input voltage of: 120-277V with 4KA Suppression or ... 347-510V with 20KA Suppression Vac 50/60 Hz Also compatible with 100-250 VDC
- .98 Minimum Input Power Factor

EF-080N (with Optics)



EF-080N (With Secondary Optics)

- Great for Parking Decks, Low Ceilings and areas where maximum light disbursement is sought. Suggested mounting height range of 7 to 14ft. (Depending upon lighting Grid / Number of units used – Please request [Glowble's specific cut sheet regarding this product for foot-candle estimates.](#))
- Replaces a traditional 250W to 400W MH and only uses 85 or 126 Watts of Power based upon the (SO/HO) output level chosen/ordered. (See the [Glowble EF-Series Quick Reference Guide](#) on Page 13 for a table containing all critical fixture Performance Data)
- Produces 13,400 or 18,400 Lumens dependent upon the (SO/HO) output level chosen/ordered. (±10% variance)
- L90 Lumen maintenance in Hours (Per IES TM-21 Testing): 84,700 Hours
- Light Color: 5,500 Kelvin (±100)
- Dimensions: 24"x7"x4"; Weight: 14lbs
- Input voltage of: 120-277V with 4KA Suppression or ... 347-510V with 20KA Suppression Vac 50/60 Hz Also compatible with 100-250 VDC
- .98 Minimum Input Power Factor

EF-080WP



EF-080WP

- Perfect for Exterior and Interior Wall Mounted illumination. Suggested mounting height range of 10 to 30ft.
- Replaces a traditional 250W to 400W MH and only uses 85 or 126 Watts of Power based upon the (SO/HO) output level chosen/ordered. (See the [Glowble EF-Series Quick Reference Guide](#) on Page 13 for a table containing all critical fixture Performance Data)
- Produces 13,400 or 18,400 Lumens dependent upon the (SO/HO) output level chosen/ordered. (±10% variance)
- L90 Lumen maintenance in Hours (Per IES TM-21 Testing): 84,700 Hours
- Light Color: 5,500 Kelvin (±100)
- Dimensions: 24"x7.5"x7.5"; Weight: 15lbs
- Input voltage of: 120-277V with 4KA Suppression or ... 347-510V with 20KA Suppression Vac 50/60 Hz Also compatible with 100-250 VDC
- .98 Minimum Input Power Factor

Glowble EF Series LED Fixtures

Model Options:



EF-080F



EF-080F

- Great for Manufacturing and Warehouse Low & Medium Bay Lighting where rigid surface mounting is needed. Suggested mounting height range of 10 to 40ft. (Depending upon lighting Grid / Number of units used – See Glowble Foot-Candle Chart on Page 14 for sample light output results)
- Replaces a traditional 250W to 400W MH and only uses 85 or 126 Watts of Power based upon the (SO/HO) output level chosen/ordered. (See the [Glowble EF-Series Quick Reference Guide](#) on Page 13 for a table containing all critical fixture Performance Data)
- Produces 13,400 or 18,400 Lumens dependent upon the (SO/HO) output level chosen/ordered. (±10% variance)
- L90 Lumen maintenance in Hours (Per IES TM-21 Testing): 84,700 Hours
- Light Color: 5,500 Kelvin (±100)
- Dimensions: 12"x14"x5"; Weight: 15lbs
- Input voltage of:
120-277V with 4KA Suppression or ...
347-510V with 20KA Suppression
Vac 50/60 Hz
Also compatible with 100-250 VDC
- 98 Minimum Input Power Factor

EF-080F (With Slip Fitter)



EF-080F (With Slip Fitter)

- Great for Bull Horn Mounting onto a Pole / Building when needing Interior/Exterior Lighting for Manufacturing Safety, Security, and Parking. Suggested mounting height range of 10 to 40ft. (Depending upon lighting Grid / Number of units used – See Glowble Foot-Candle Chart on Page 14 for sample light output results)
- Replaces a traditional 250W to 400W MH and only uses 85 or 126 Watts of Power based upon the (SO/HO) output level chosen/ordered. (See the [Glowble EF-Series Quick Reference Guide](#) on Page 13 for a table containing all critical fixture Performance Data)
- Produces 13,400 or 18,400 Lumens dependent upon the (SO/HO) output level chosen/ordered. (±10% variance)
- L90 Lumen maintenance in Hours (Per IES TM-21 Testing): 84,700 Hours
- Light Color: 5,500 Kelvin (±100)
- Dimensions: 12"x14"x7" (Before Slip-Fitter Bracket; Weight: 20lbs)
- Input voltage of:
120-277V with 4KA Suppression or ...
347-510V with 20KA Suppression
Vac 50/60 Hz
Also compatible with 100-250 VDC
.98 Minimum Input Power Factor

EF-080A



EF-080A

- Great for Manufacturing and Warehouse Low & Medium Bay Lighting where center or chain mounting is needed. Suggested mounting height range of 10 to 40ft. (Depending upon lighting Grid / Number of units used – See Glowble Foot-Candle Chart on Page 14 for sample light output results)
- Replaces a traditional 250W to 400W MH and only uses 85 or 126 Watts of Power based upon the (SO/HO) output level chosen/ordered. (See the [Glowble EF-Series Quick Reference Guide](#) on Page 13 for a table containing all critical fixture Performance Data)
- Produces 13,400 or 18,400 Lumens dependent upon the (SO/HO) output level chosen/ordered. (±10% variance)
- L90 Lumen maintenance in Hours (Per IES TM-21 Testing): 84,700 Hours
- Light Color: 5,500 Kelvin (±100)
- Dimensions: 12"x14"x6.5"; Weight: 15lbs
- Input voltage of:
120-277V with 4KA Suppression or ...
347-510V with 20KA Suppression
Vac 50/60 Hz
Also compatible with 100-250 VDC
- 98 Minimum Input Power Factor

Glowble EF Series LED Fixtures

Model Options:



EF-120F



EF-120F

- Great for Manufacturing & Warehouse Medium & High Bay and Rigid Crane Mounted lighting. Suggested mounting height range of 20 to 60ft. (Depending upon lighting Grid / Number of units used – See [Glowble Foot-Candle Chart](#) on Page 14 for sample light output results)
- Replaces a traditional 400W MH and only uses 130 or 190 Watts of Power based upon the (SO/HO) output level chosen/ordered. (See the [Glowble EF-Series Quick Reference Guide](#) on Page 13 for a table containing all critical fixture Performance Data)
- Produces 20,100 or 27,600 Lumens dependent upon the (SO/HO) output level chosen/ordered. (±10% variance)
- L90 Lumen maintenance in Hours (Per IES TM-21 Testing): 84,700 Hours
- Light Color: 5,500 Kelvin (±100)
- Dimensions: 12"x21"x5"; Weight: 22lbs
- Input voltage of:
120-277V with 4KA Suppression or ...
347-510V with 20KA Suppression
Vac 50/60 Hz
Also compatible with 100-250 VDC
- 98 Minimum Input Power Factor

EF-120A



EF-120A

- Great for Manufacturing & Warehouse Medium & High Bay Lighting where center or chain mounting is needed. Suggested mounting height range of 20 to 60ft. (Depending upon lighting Grid / Number of units used – See [Glowble Foot-Candle Chart](#) on Page 14 for sample light output results)
- Replaces a traditional 400W MH and only uses 130 or 190 Watts of Power based upon the (SO/HO) output level chosen/ordered. (See the [Glowble EF-Series Quick Reference Guide](#) on Page 13 for a table containing all critical fixture Performance Data)
- Produces 20,100 or 27,600 Lumens dependent upon the (SO/HO) output level chosen/ordered. (±10% variance)
- L90 Lumen maintenance in Hours (Per IES TM-21 Testing): 84,700 Hours
- Light Color: 5,500 Kelvin (±100)
- Dimensions: 12"x21"x6.5"; Weight: 22lbs
- Input voltage of:
120-277V with 4KA Suppression or ...
347-510V with 20KA Suppression
Vac 50/60 Hz
Also compatible with 100-250 VDC
- 98 Minimum Input Power Factor

EF-120A (With Pole Mount)



EF-120A (with Pole Mount Arm)

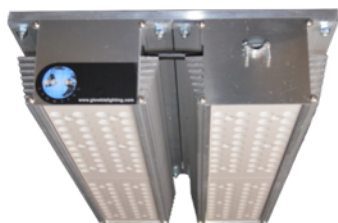
- Perfect for Exterior Pole Mounted Lighting in Parking Lots and other outdoor lighting needs where poles are present. Suggested mounting height range of 20 to 50ft. (Depending upon lighting Grid / Number of units used – See [Glowble Foot-Candle Chart](#) on Page 14 for sample light output results)
- Replaces a traditional 400W MH and only uses 130 or 190 Watts of Power based upon the (SO/HO) output level chosen/ordered. (See the [Glowble EF-Series Quick Reference Guide](#) on Page 13 for a table containing all critical fixture Performance Data)
- Produces 20,100 or 27,600 Lumens dependent upon the (SO/HO) output level chosen/ordered. (±10% variance)
- L90 Lumen maintenance in Hours (Per IES TM-21 Testing): 84,700 Hours
- Light Color: 5,500 Kelvin (±100)
- Dimensions: 12"x21"x10"; Weight: 27lbs
- Input voltage of:
120-277V with 4KA Suppression or ...
347-510V with 20KA Suppression
Vac 50/60 Hz
Also compatible with 100-250 VDC
- 98 Minimum Input Power Factor

Glowble EF Series LED Fixtures

Model Options:



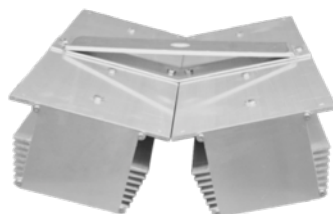
EF-160F



EF-160F

- Great for Manufacturing & Warehouse High Bay and Rigid Crane Mounted lighting. Suggested mounting height range of 30 to 75ft.
(Depending upon lighting Grid / Number of units used – See Glowble Foot-Candle Chart on Page 14 for sample light output results)
- Replaces a traditional 400W to 1,000W MH and only uses 172 or 250 Watts of Power based upon the (SO/HO) output level chosen/ordered.
(See the [Glowble EF-Series Quick Reference Guide](#) on Page 13 for a table containing all critical fixture Performance Data)
- Produces 26,800 or 36,800 Lumens dependent upon the (SO/HO) output level chosen/ordered. (±10% variance)
- L90 Lumen maintenance in Hours (Per IES TM-21 Testing): 84,700 Hours
- Light Color: 5,500 Kelvin (±100)
- Dimensions: 24" x 14" x 5"; Weight: 30lbs
- Input voltage of:
120-277V with 4KA Suppression or ...
347-510V with 20KA Suppression
Vac 50/60 Hz
Also compatible with 100-250 VDC
- 98 Minimum Input Power Factor

EF-160A



EF-160A

- Great for Manufacturing & Warehouse High Bay Lighting were center or chain mounting is needed. Suggested mounting height range of 30 to 75ft.
(Depending upon lighting Grid / Number of units used – See Glowble Foot-Candle Chart on Page 14 for sample light output results)
- Replaces a traditional 400W to 1,000W MH and only uses 172 or 250 Watts of Power based upon the (SO/HO) output level chosen/ordered.
(See the [Glowble EF-Series Quick Reference Guide](#) on Page 13 for a table containing all critical fixture Performance Data)
- Produces 26,800 or 36,800 Lumens dependent upon the (SO/HO) output level chosen/ordered. (±10% variance)
- L90 Lumen maintenance in Hours (Per IES TM-21 Testing): 84,700 Hours
- Light Color: 5,500 Kelvin (±100)
- Dimensions: 24" x 14" x 6.5"; Weight: 30lbs
- Input voltage of:
120-277V with 4KA Suppression or ...
347-510V with 20KA Suppression
Vac 50/60 Hz
Also compatible with 100-250 VDC
- 98 Minimum Input Power Factor

EF-240F



EF-240F

- Great for Manufacturing & Warehouse High Bay and Rigid Crane Mounted lighting. Suggested mounting height range of 40 to 100ft.
(Depending upon lighting Grid / Number of units used – See Glowble Foot-Candle Chart on Page 14 for sample light output results)
- Replaces a traditional 1,000W MH or greater and only uses 258 or 377 Watts of Power based upon the (SO/HO) output level chosen/ordered.
(See the [Glowble EF-Series Quick Reference Guide](#) on Page 13 for a table containing all critical fixture Performance Data)
- Produces 40,200 or 55,730 Lumens dependent upon the (SO/HO) output level chosen/ordered. (±10% variance)
- L90 Lumen maintenance in Hours (Per IES TM-21 Testing): 84,700 Hours
- Light Color: 5,500 Kelvin (±100)
- Dimensions: 24" x 21" x 5"; Weight: 45lbs
- Input voltage of:
120-277V with 4KA Suppression or ...
347-510V with 20KA Suppression
Vac 50/60 Hz
Also compatible with 100-250 VDC
- 98 Minimum Input Power Factor

Glowble EF Series LED Fixtures

Model Options:



EF-240A



EF-240A

- Great for Manufacturing & Warehouse High Bay Lighting where center or chain mounting is needed. Suggested mounting height range of 40 to 100ft. (Depending upon lighting Grid / Number of units used – See [Glowble Foot-Candle Chart](#) on Page 14 for sample light output results)
- Replaces a traditional 1,000W MH or greater and only uses 258 or 377 Watts of Power based upon the (SO/HO) output level chosen/ordered. (See the [Glowble EF-Series Quick Reference Guide](#) on Page 13 for a table containing all critical fixture Performance Data)
- Produces 40,200 or 55,730 Lumens dependent upon the (SO/HO) output level chosen/ordered. (±10% variance)
- L90 Lumen maintenance in Hours (Per IES TM-21 Testing): 84,700 Hours
- Light Color: 5,500 Kelvin (±100)
- Dimensions: 24"x21"x6.5"; Weight: 45lbs
- Input voltage of:
120-277V with 4KA Suppression or ...
347-510V with 20KA Suppression
Vac 50/60 Hz
Also compatible with 100-250 VDC
- 98 Minimum Input Power Factor

EF-240A (w/Trunnion)



EF-240A (With Trunnion Mount)

- Great for Interior and Exterior Pole or Surface Mounting when you want to illuminate an area from a distance by directing the light pattern. Suggested mounting height range of 40 to 100ft. (Depending upon lighting Grid / Number of units used – See [Glowble Foot-Candle Chart](#) on Page 14 for sample light output results)
- Replaces a traditional 1,000W MH or greater and only uses 258 or 377 Watts of Power based upon the (SO/HO) output level chosen/ordered. (See the [Glowble EF-Series Quick Reference Guide](#) on Page 13 for a table containing all critical fixture Performance Data)
- Produces 40,200 or 55,730 Lumens dependent upon the (SO/HO) output level chosen/ordered. (±10% variance)
- L90 Lumen maintenance in Hours (Per IES TM-21 Testing): 84,700 Hours
- Light Color: 5,500 Kelvin (±100)
- Dimensions: 24"x21"x14"; Weight: 60lbs
- Input voltage of:
120-277V with 4KA Suppression or ...
347-510V with 20KA Suppression
Vac 50/60 Hz
Also compatible with 100-250 VDC
- 98 Minimum Input Power Factor

EF-320F



EF-320F

- Great for Manufacturing & Warehouse High Bay and Rigid Crane Mounted lighting. Suggested mounting height range of 40 to 120ft. (Depending upon lighting Grid / Number of units used – See [Glowble Foot-Candle Chart](#) on Page 14 for sample light output results)
- Replaces a traditional 1,500W MH or greater and only uses 3244 or 500 Watts of Power based upon the (SO/HO) output level chosen/ordered. (See the [Glowble EF-Series Quick Reference Guide](#) on Page 13 for a table containing all critical fixture Performance Data)
- Produces 53,600 or 73,600 Lumens dependent upon the (SO/HO) output level chosen/ordered. (±10% variance)
- L90 Lumen maintenance in Hours (Per IES TM-21 Testing): 84,700 Hours
- Light Color: 5,500 Kelvin (±100)
- Dimensions: 24"x28"x5"; Weight: 60lbs
- Input voltage of:
120-277V with 4KA Suppression or ...
347-510V with 20KA Suppression
Vac 50/60 Hz
Also compatible with 100-250 VDC
- 98 Minimum Input Power Factor

Industry Leader in High Temperature Environments:

At Glowble we believe in the philosophy of under promising and over delivering. Based out of our proprietary heat dissipation design, Glowble proudly states all of our EF-Series fixture performances at varying ambient operating temperature levels so you can see how the fixture will perform in your specific environment. This is a departure from most manufacturers in the lighting industry who generally choose to state fixture Lumens output at ambient temperature levels of 77°F and do not tell you how the fixture will perform in higher temperature environments.

Glowble's proprietary design also allows for less heat to be contained by the fixture, which creates less stress on all components. This equals a fixture with a longer more productive life span. Glowble EF-Series fixtures are designed to achieve 90% lumen maintenance at 84,700 hours when operating in ambient temperatures equal to or less than the stated 100% output level temperature. That is over 9½ years of 24 hour per day continuous use!

For the "SO" output fixtures, when staying ≤ 150°F ambient operational temperatures, warranty levels are 10-years on the light engines and Housing and 7-years on the driver. For the "HO" output fixtures, when staying ≤ 125°F ambient operational temperatures, warranty levels are 5-years on all components.

Please review the temperature chart to below to see how each Glowble fixture performs in your specific ambient operational temperature environment.

EF Series Standard Output (SO) & High Output (HO) Operating Characteristics Versus Ambient Temperature

AMBIENT TEMP IN °F/°C		EF-040		EF-080		EF-120		EF-160		EF-240		EF-320	
		SO	HO	SO	HO	SO	HO	SO	HO	SO	HO	SO	HO
-40°F/-40°C	Lumen Output %	110.17%	109.52%	110.17%	109.52%	110.17%	109.52%	110.17%	109.52%	110.17%	109.52%	110.17%	109.52%
	Total Lumens	7,100	9,800	14,210	19,600	21,310	29,400	28,420	39,200	42,630	59,380	56,840	78,410
	Lumens/Watt	165	156	167	156	163	155	165	157	165	158	165	157
30°F/-1°C	Lumen Output %	106.40%	108.90%	106.40%	108.90%	106.40%	108.90%	106.40%	108.90%	106.40%	108.90%	106.40%	108.90%
	Total Lumens	6,860	9,740	13,720	19,490	20,580	29,230	27,450	38,980	41,170	59,040	54,900	77,970
	Lumens/Watt	159	155	161	155	158	154	159	156	159	157	159	156
77°F/25°C	Lumen Output %	103.88%	102.80%	103.88%	102.80%	103.88%	102.80%	103.88%	102.80%	103.88%	102.80%	103.88%	102.80%
	Total Lumens	6,700	9,200	13,400	18,400	20,100	27,600	26,800	36,800	40,200	55,730	53,600	73,600
	Lumens/Watt	155	146	157	146	154	145	155	147	155	147	155	147
80°F/27°C	Lumen Output %	103.68%	102.59%	103.68%	102.59%	103.68%	102.59%	103.68%	102.59%	103.68%	102.59%	103.68%	102.59%
	Total Lumens	6,680	9,180	13,370	18,360	20,060	27,540	26,740	36,720	40,120	55,620	53,490	73,450
	Lumens/Watt	155	146	157	146	154	145	155	147	155	148	155	147
90°F/32°C	Lumen Output %	103.20%	102.07%	103.20%	102.07%	103.20%	102.07%	103.20%	102.07%	103.20%	102.07%	103.20%	102.07%
	Total Lumens	6,650	9,130	13,310	18,270	19,960	27,400	26,620	36,540	39,930	55,340	53,250	73,080
	Lumens/Watt	154	145	156	145	153	144	154	146	154	147	154	146
100°F/38°C	Lumen Output %	102.62%	101.45%	102.62%	101.45%	102.62%	101.45%	102.62%	101.45%	102.62%	101.45%	102.62%	101.45%
	Total Lumens	6,610	9,070	13,230	18,150	19,850	27,230	26,470	36,310	39,710	55,000	52,950	72,630
	Lumens/Watt	153	144	155	144	152	143	153	145	153	146	153	145
110°F/43°C	Lumen Output %	102.13%	100.93%	102.13%	100.93%	102.13%	100.93%	102.13%	100.93%	102.13%	100.93%	102.13%	100.93%
	Total Lumens	6,580	9,030	13,170	18,060	19,760	27,090	26,340	36,130	39,520	54,720	52,690	72,260
	Lumens/Watt	153	143	154	143	152	143	153	145	153	145	153	145
120°F/49°C	Lumen Output %	101.55%	100.31%	101.55%	100.31%	101.55%	100.31%	101.55%	100.31%	101.55%	100.31%	101.55%	100.31%
	Total Lumens	6,540	8,970	13,090	17,950	19,640	26,930	26,190	35,910	39,290	54,380	52,390	71,820
	Lumens/Watt	152	142	154	142	151	142	152	144	152	144	152	144
125°F*/52°C	Lumen Output %	101.26%	100.00%	101.26%	100.00%	101.26%	100.00%	101.26%	100.00%	101.26%	100.00%	101.26%	100.00%
	Total Lumens	6,530	8,950	13,060	17,900	19,590	26,850	26,120	35,800	39,180	54,220	52,250	71,600
	Lumens/Watt	151	142	153	142	150	141	151	143	151	144	151	143
130°F*/54°C	Lumen Output %	101.07%	99.79%	101.07%	99.79%	101.07%	99.79%	101.07%	99.79%	101.07%	99.79%	101.07%	99.79%
	Total Lumens	6,510	8,930	13,030	17,860	19,550	26,790	26,070	35,720	39,110	54,100	52,150	71,440
	Lumens/Watt	151	142	153	142	150	141	151	143	151	144	151	143
140°F*/60°C	Lumen Output %	100.48%	99.17%	100.48%	99.17%	100.48%	99.17%	100.48%	99.17%	100.48%	99.17%	100.48%	99.17%
	Total Lumens	6,480	8,870	12,960	17,750	19,440	26,620	25,920	35,500	38,880	53,760	51,840	71,000
	Lumens/Watt	150	141	152	141	149	140	150	142	150	143	150	142
150°F*/65°C	Lumen Output %	100.00%	98.66%	100.00%	98.66%	100.00%	98.66%	100.00%	98.66%	100.00%	98.66%	100.00%	98.66%
	Total Lumens	6,450	8,830	12,900	17,660	19,350	26,490	25,800	35,320	38,700	53,490	51,600	70,640
	Lumens/Watt	150	140	151	140	148	139	150	141	150	142	150	141
160°F*/71°C	Lumen Output %	99.42%	EF-HO Series	99.42%	EF-HO Series	99.42%	EF-HO Series	99.42%	EF-HO Series	99.42%	EF-HO Series	99.42%	EF-HO Series
	Total Lumens	6,410	Not Rated for these Ambient Temps	12,820	Not Rated for these Ambient Temps	19,230	Not Rated for these Ambient Temps	25,650	Not Rated for these Ambient Temps	38,470	Not Rated for these Ambient Temps	51,300	Not Rated for these Ambient Temps
	Lumens/Watt	149		150		147		149		149		149	
170°F*/76°C	Lumen Output %	98.93%	Not Rated for these Ambient Temps	98.93%	Not Rated for these Ambient Temps	98.93%	Not Rated for these Ambient Temps	98.93%	Not Rated for these Ambient Temps	98.93%	Not Rated for these Ambient Temps	98.93%	Not Rated for these Ambient Temps
	Total Lumens	6,380		12,760		19,140		25,520		38,280		51,040	
	Lumens/Watt	148		150		147		148		148		148	
180°F*/82°C	Lumen Output %	98.35%	Not Rated for these Ambient Temps	98.35%	Not Rated for these Ambient Temps	98.35%	Not Rated for these Ambient Temps	98.35%	Not Rated for these Ambient Temps	98.35%	Not Rated for these Ambient Temps	98.35%	Not Rated for these Ambient Temps
	Total Lumens	6,340		12,680		19,030		25,370		38,060		50,740	
	Lumens/Watt	147		149		146		147		147		147	
190°F*/87°C	Lumen Output %	97.87%	No Pro-Rated Warranty at these temp levels	97.87%	No Pro-Rated Warranty at these temp levels	97.87%	No Pro-Rated Warranty at these temp levels	97.87%	No Pro-Rated Warranty at these temp levels	97.87%	No Pro-Rated Warranty at these temp levels	97.87%	No Pro-Rated Warranty at these temp levels
	Total Lumens	6,310		12,620		18,930		25,250		37,870		50,500	
	Lumens/Watt	146		148		145		146		146		146	
199°F*/93°C	Lumen Output %	97.29%	No Pro-Rated Warranty at these temp levels	97.29%	No Pro-Rated Warranty at these temp levels	97.29%	No Pro-Rated Warranty at these temp levels	97.29%	No Pro-Rated Warranty at these temp levels	97.29%	No Pro-Rated Warranty at these temp levels	97.29%	No Pro-Rated Warranty at these temp levels
	Total Lumens	6,270		12,550		18,820		25,100		37,650		50,200	
	Lumens/Watt	145		147		144		145		145		145	

*Glowble Standard Output "SO" Fixtures are rated for a maximum ambient operating temperature of 150°F. Glowble High Output "HO" fixtures are rated for a maximum ambient operating temperature of 125°F. Operation of fixtures outside of these parameters either lessens or voids the standard warranty depending upon the severity of the ambient operational temperature. Please refer to the Warranty and Pro-Rated Warranty Chart below:

Fixture Output Type	Ambient Temperature Exposure Range	Limited Warranty Level	Fixture Output Type	Ambient Temperature Exposure Range	Limited Warranty Level
SO	(-40°F/-40°C to +150°F/+65°C)	Full Limited Warranty as Previously Stated	HO	(-40°F/-40°C to +125°F/+52°C)	Full Limited Warranty as Previously Stated
SO	(+151°F/+63°C to +170°F/+76°C)	Pro-Rated 6-Year Limited Warranty	HO	(+126°F/+53°C to +135°F/+57°C)	Pro-Rated 4-Year Limited Warranty
SO	(+171°F/+77°C to +180°F/+82°C)	Pro-Rated 4-Year Limited Warranty	HO	(+136°F/+58°C to +145°F/+62°C)	Pro-Rated 3-Year Limited Warranty
SO	(+181°F/+83°C to +199°F/+92°C)	Pro-Rated 3-Year Limited Warranty	HO	(+145°F/+63°C to +149°F/+65°C)	Pro-Rated 2-Year Limited Warranty
SO	≥ 200°F	No Warranty	HO	≥ 150°F	No Warranty

Quick Reference Guide

At Glowble we realize that finding the best fixture for your specific application is important. When trying to figure out which Glowble EF Series fixture is right for you, we find that the matrix provided below can help point you in the right direction and gives a starting point as you head toward your custom built fixture for your specific application.

GLOWBLE LIGHTING EF-SERIES QUICK REFERENCE GUIDE:

FIXTURE OUTPUT LEVELS & PERFORMANCE SPECIFICATIONS TABLE

LED COUNT	OUTPUT VERSION	LUMEN OUTPUT AT 77°F/25°C AMBIENT OPERATING TEMP	LUMEN OUTPUT AT MAXIMUM AMBIENT OPERATING TEMP	FIXTURE POWER CONSUMED IN WATTS	SYSTEM EFFICACY IN LUMENS PER WATT AT 77°F/25°C AMBIENT	SYSTEM EFFICACY IN LUMENS PER WATT AT MAXIMUM AMBIENT	MAXIMUM AMBIENT OPERATING TEMP WITH FULL WARRANTY	FIXTURE HOUSING AND LIGHT ENGINE WARRANTY PERIOD	POWER DRIVER WARRANTY PERIOD	L90 LUMEN MAINT. IN HOURS (PER IES TM-21 TESTING)	L70 LUMEN MAINT. IN HOURS (PER IES TM-21 TESTING)
040	SO	6,700	6,450	43	155	150	+150°F/+65°C	10-Years	7-Years	84,700	207,000
040	HO	9,200	8,950	63	146	142	+125°F/+52°C	5-Years	5-Years	84,700	150,000
080	SO	13,400	12,900	85	157	151	+150°F/+65°C	10-Years	7-Years	84,700	207,000
080	HO	18,400	17,900	126	146	142	+125°F/+52°C	5-Years	5-Years	84,700	150,000
120	SO	20,100	19,350	130	154	148	+150°F/+65°C	10-Years	7-Years	84,700	207,000
120	HO	27,600	26,850	190	145	141	+125°F/+52°C	5-Years	5-Years	84,700	150,000
160	SO	26,800	25,800	172	155	150	+150°F/+65°C	10-Years	7-Years	84,700	207,000
160	HO	36,800	35,800	250	147	143	+125°F/+52°C	5-Years	5-Years	84,700	150,000
240	SO	40,200	38,700	258	155	150	+150°F/+65°C	10-Years	7-Years	84,700	207,000
240	HO	55,730	54,220	377	147	143	+125°F/+52°C	5-Years	5-Years	84,700	150,000
320	SO	53,600	51,600	344	155	150	+150°F/+65°C	10-Years	7-Years	84,700	207,000
320	HO	73,600	71,600	500	147	143	+125°F/+52°C	5-Years	5-Years	84,700	150,000

FIXTURE OUTPUT LEVELS & PERFORMANCE SPECIFICATIONS TABLE

LED COUNT	OUTPUT VERSION	LUMEN OUTPUT AT 77°F/25°C AMBIENT OPERATING TEMP	FIXTURE POWER CONSUMED IN WATTS	REPLACES THE FOLLOWING TRADITIONAL METAL HALIDE FIXTURE	SUGGESTED HANGING HEIGHT RANGE (IN FEET)	EXTERIOR DIMENSIONS (ALL NUMBERS IN INCHES)	APPROX. WEIGHT (IN LBS)	AMP DRAW CALCULATION		
								120V	277V	480V
040	SO	6,700	43W	175-250W	7' TO 25'	12L x 7W x 4H	7	0.36	0.16	0.09
040	HO	9,200	63W	250W	10' TO 30'	12L x 7W x 4H	7	0.53	0.23	0.13
080	SO	13,400	85W	250W	10' TO 35'	24L x 7W x 4H ("N" Config)	14	0.71	0.31	0.18
080	HO	18,400	126W	400W	15' TO 40'	12L x 14W x 6.5H ("A" Config)	15	1.05	0.45	0.26
120	SO	20,100	130W	400W	20' TO 40'	12L x 21W x 6.5H ("A" Config)	22	1.08	0.47	0.27
120	HO	27,600	190W	400W	25' TO 50'	12L x 21W x 5H ("F" Config)	22	1.58	0.69	0.40
160	SO	26,800	172W	400W	25' TO 50'	24L x 14W x 6.5H ("A" Config)	30	1.43	0.62	0.36
160	HO	36,800	250W	1000W	30' TO 75'	24L x 14W x 5H ("F" Config)	30	2.08	0.90	0.52
240	SO	40,200	258W	1000W	35' TO 80'	24L x 21W x 6.5H ("A" Config)	45	2.15	0.93	0.54
240	HO	55,730	377W	> 1000W	40' TO 100'	24L x 21W x 5H ("F" Config)	45	3.14	1.36	0.79
320	SO	53,600	344W	> 1000W	40' TO 100'	24L x 28W x 5H ("F" Config)	60	2.87	1.24	0.72
320	HO	73,600	500W	> 1500W	50' TO 120'	24L x 28W x 5H ("F" Config)	60	4.17	1.81	1.04

Let us help you build the best fixture possible for your application:

Whether it is a new construction project or a lighting upgrade, Glowble is here to assist you with selecting the best fixture for your specific project. We know that the market is flooded with lighting options and we always welcome a chance to compare other products you might be considering versus a Glowble product.

While better quality lighting that consumes less energy for a great price is always the goal, we also realize that dependability, longevity, and consistency are paramount in making sure that our customers don't experience "buyers remorse". Glowble takes the standpoint of being a partner in helping you develop a lighting plan that will accomplish all of these goals.

With a 10-year operational track record, Glowble has developed significant long-term relationships with our distributors and end-user by being incredibly responsive to requests and fully supporting our products should any issues or problems arise. Please contact your local Glowble Lighting Distributor to start the process of choosing the best configuration possible for your application.

Foot-Candle Reference Guide

Many times figuring out which fixture to use can be a multi-step process. Glowble wants to help make this process as easy as possible. We have developed a Foot-Candle Reference Guide in addition to our Quick Reference Guide that can help assist you in selecting the best product for your application. The Guide will give you an idea of the actual foot-candles that will exist at floor level using any specific fixture at the different pre-designated grid configurations and hanging heights. This guide is below.

Glowble EF-Series Estimated Foot Candle Chart																						
Grid Size Example Building Dimensions Total Example Building in Sq.Ft.	Fixture Name	Output Type	Hanging Height (in Feet)																			
			10'	15'	20'	25'	30'	35'	40'	45'	50'	60'	70'	80'	90'	100'	110'	120'				
10' x 10' 100' x 100' 10,000 Sq.Ft.	EF-040	SO	69	65	62	59	56	53	50	48	45											
	EF-040	HO	98	93	88	84	79	75	72	68	65											
15' x 15' 100' x 100' 10,000 Sq.Ft.	EF-040	SO	34	32	30	29	27	26	25	23	22											
	EF-040	HO	48	46	43	41	39	37	35	33	32											
	EF-080	SO	66	63	59	56	53	50	47	45	43	38	35									
	EF-080	HO	92	87	82	78	74	70	66	63	59	54	49									
20' x 20' 100' x 100' 10,000 Sq.Ft.	EF-040	SO	17	16	15	14	13															
	EF-040	HO	24	23	22	21	20															
	EF-080	SO	34	32	30	29	27	26	24	23	22	20										
	EF-080	HO	47	44	42	40	38	36	34	32	30	27										
	EF-120	SO	50	48	45	42	40	38	36	34	32	29	27	24								
	EF-120	HO	72	68	64	61	57	54	51	49	46	42	38	35								
	EF-160	SO	67	63	59	56	53	50	47	45	43	38	35	32	29	27						
	EF-160	HO	95	90	85	81	76	72	68	65	61	56	51	46	43	39						
25' x25' 200' x 200' 40,000 Sq.Ft.	EF-040	SO	12	11	10																	
	EF-040	HO	16	16	16																	
	EF-080	SO	23	22	22	21	20	20	19	18												
	EF-080	HO	32	31	31	30	29	28	28	27												
	EF-120	SO	34	33	32	31	30	30	29	28	27	26										
	EF-120	HO	49	48	46	45	44	42	41	40	39	37										
	EF-160	SO	45	44	43	42	40	39	38	37	36	34	32	30	29	27						
	EF-160	HO	67	63	61	59	58	56	55	53	52	49	46	44	41	39						
	EF-240	SO		68	64	62	61	59	57	56	54	51	48	46	43	41	39	37				
	EF-240	HO		93	90	88	85	83	81	78	76	72	68	65	61	58	56	53				
30' x 30' 200' x 200' 40,000 Sq.Ft.	EF-320	SO							78	76	74	70	66	63	60	57	54	52				
	EF-320	HO							109	106	103	98	93	88	84	80	76	72				
	EF-080	SO	18	17	17	16	16	15	15	14												
	EF-080	HO	25	24	23	23	22	22	21	21												
	EF-120	SO	26	25	25	24	23	23	22	21	21	20										
	EF-120	HO	37	36	35	34	33	32	32	31	30	28										
	EF-160	SO	35	34	33	32	31	30	29	28	27	26	24	23	22	21						
	EF-160	HO	49	48	47	46	44	43	42	41	39	37	35	33	32	30						
	EF-240	SO		50	49	48	46	45	44	43	41	39	37	35	33	32	30	29				
	EF-240	HO		71	69	67	65	64	62	60	58	55	52	50	47	45	42	40				
	EF-320	SO			68	66	64	63	60	58	57	54	51	48	46	44	42	40				
	EF-320	HO			92	90	88	85	83	81	79	75	71	67	64	61	58	55				
			10' X 10' Grid - SO				15' X 15' Grid - SO				20' X 20' Grid - SO				25' X 25' Grid - SO				30' X 30' Grid - SO			
			10' X 10' Grid - HO				15' X 15' Grid - HO				20' X 20' Grid - HO				25' X 25' Grid - HO				30' X 30' Grid - HO			

10' X 10' Grid - SO

10' X 10' Grid - HO

15' X 15' Grid - SO

15' X 15' Grid - HO

20' X 20' Grid - SO

20' X 20' Grid - HO

25' X 25' Grid - SO

25' X 25' Grid - HO

30' X 30' Grid - SO

30' X 30' Grid - HO

Order a Custom Light for Your Specific Application:

Glowble EF Series LED Fixtures can be ordered in almost limitless combinations and options. For an explanation and demonstration of how to order the specific fixture you need please review the information below. Your Glowble Lighting Distributor stands ready to assist you in completing the part number specific to your needs.

CONFIGURE A GLOWBLE EF-SERIES FIXTURE TO BEST MEET THE SPECIFIC NEEDS OF YOUR APPLICATION

1	2	3	4	5	6	7	8	9	10	11	12	13
SERIES TYPE	LED COUNT	FIXTURE BRACKET STYLE	FIXTURE OUTPUT SELECTED	DRIVE VOLTAGE	FIXTURE REFLECTOR TYPE / COLOR	FIXTURE MOUNTING APPARATUS	FIXTURE POWER CORD LENGTH (in inches)	FIXTURE PLUG TYPE	FIXTURE ADD-ON #1 (If none place "NA" in this box & Configuration is finished)	FIXTURE ADD-ON #2 (If none place "NA" in this box and Configuration is finished)	FIXTURE ADD-ON #3 (If none place "NA" in this box and Configuration is finished)	FIXTURE ADD-ON #4 (If none place "NA" in this box and Configuration is finished)

1: SERIES TYPE

EF = EF - Series

2: LED COUNT (See Chart below)

040 = 40 LEDs	080 = 80 LEDs	120 = 120 LEDs
160 = 160 LEDs	240 = 240 LEDs	320 = 320 LEDs

3: FIXTURE BRACKET STYLE

(How multiple housing segments are joined together)

A = 15° Angle Bracket - When desiring a 3/4" center pendant mount this bracket arrangement is the best option due to its knockout in the center of the bracket for this specific purpose. Pipe nipple and lock rings not included. Additional hardware for a complete hanging solutions can be chosen in the FIXTURE MOUNTING APPARATUS section if desired. (Available on All Units - except single body EF-040N; EF-080N and the EF-320)

F = Flat Mount - Best configuration for flat surfaces where the fixture needs to be rigid mounted. (Available on All Units - except single body EF-040N; EF-080N)

N = None - Use this configuration when choosing a single body fixture. (The Only single body fixture options are the EF-040N or EF-080N)

WP = Wall Pack - Use this configuration when wanting a fixed 45° Wall Mounted Unit. Standard Power Cord Exit is at the rear of the mount where it touches the wall. (Only for the EF-040N or EF-080N single body Units) - Choose "NM" in Section 7 when using a Wall Pack

4: FIXTURE OUTPUT SELECTED (See Chart Below)

SO = Standard Output - (350ma Drive Current) - 100% output or greater in ambient temperatures up to +150°F/+65°C

HO = High Output - (530ma Drive Current) - Not Recommended for Applications where the ambient temperature exceeds +125°F/+52°C

5: DRIVER VOLTAGE

SV = Standard Voltage: 90-305VAC; 50/60 Hz; 4KA Surge

Suppression Protection: (Also compliant for 90-250V DC Applications)

HV = High Voltage: 347-480VAC; 50/60 Hz; 20KA Surge

Suppression Protection

6: FIXTURE REFLECTOR TYPE / COLOR

W = White - Standard Face Color

C = Chrome - Vacuum Metalized Chrome Face - Recommend for high heat applications due to the reflectors ability to deflect radiant heat away from the fixture's face

S = Secondary Optics: Recommended for Maximum Light Distribution at Low Levels ≤ 15ft - No Reflector when secondary optics are used; (Optics are only Available on Single Body EF-040N; EF-040WP; EF-080N; and EF-080WP fixtures.)

7: FIXTURE MOUNTING APPARATUS

NM = No Mount - Choose when using the 3/4" standard knockout (on all Angle "A" fixture Bracket Styles); when using the existing peripheral fixture holes for hanging/mounting (on all Flat "F" fixture bracket styles); when using a Wall Pack "WP" in Section 3. No additional hardware is needed in these instances.

EB = Eye Bolt Hanger - Additional 3/8" Bolt Hardware offered in conjunction with a center mount option for an Angle ("A") or Flat ("F") Bracketed fixture where a 3/4 pipe nipple and lock rings are not required. (Not available for "N" Bracketed fixtures)

JB = J Bolt Hanger - Additional 3/8" Bolt Hardware offered in conjunction with a center mount option for an Angle ("A") or Flat ("F") Bracketed fixture where a 3/4 pipe nipple and lock rings are not required. (Not available for "N" Bracketed fixtures)

SF = 2" Slip Fitter - Choose when wanting an adjustable fixture mount both vertically and horizontally. Fits a standard 2" pipe bull-horn mount (not included). (Only compatible with the EF-040N; EF-080F; EF-120A; EF-120F; EF-160F; EF-240A; & EF-240F fixtures)

PM = Pole Mount Arm - Fixed 15° Angle Steel Mounting Arm (powder coated black) with universal bolt configuration base. (Compatible with all Angle or Flat bracketed fixtures except the EF-080A and EF-160A)

PN = Pendant Mount - Only use when you want to center mount an EF-040N or EF-080N fixture instead of using any combination of the fixtures standard six peripheral mounting/hanging holes

PF = 3/4" Pendant Flange Mount - Only choose when you want to center hang a Flat Mount Bracketed Fixture with 3/4 threaded pipe nipple (not included). (Only for EF-080F; EF-160F; EF-240F & EF-320F fixtures)

PFN = 3/4" Pendant Flange Mount (including Pipe Nipple) - Nipple Length to be specified by requestor at time of quote request

TB = Trunion Bracket - Fixed Point Adjustable Angle Bracket (Only compatible with the EF-040N; EF-080F; EF-120F; & EF120A fixtures)

TM = Trunion Mount - Heavy Duty all-steel (powder coated black) fixed point adjustable angle Bracket (Only compatible with the EF-120A, EF-120F, EF-160F, EF-240A, EF-240F & EF-320F fixtures)

RM = Ring Mount - 35° Fixed Angle all-steel (powder coated black) 2" Pole Ring Mounting bracket associated with High Mast Pole Applications (Compatible only with EF-160F, EF-240A, EF-240F, & EF-320F Units)

CM = Custom Mount - Creation of a unique mount for a specific application. (All custom mounts are limited by application and may not be available in some instances. Pricing is additional and TBD based upon the materials and engineering time required as well as total quantity needed.)

8: FIXTURE POWER CORD LENGTH (in inches)

≤ 36: (Standard length with no additional cost)	48	60	72	84	96	108
---	----	----	----	----	----	-----

or..."XXX" = Number of Inches for Custom Length Up to 180 inches (15ft)

9: FIXTURE PLUG TYPE

NP = No Plug

TL = 15A Twistlock Plug: *must specify the voltage application (120VAC, 277VAC, or 480VAC) when requesting quote or placing order

TP = 120V Three Prong 15A Straight Plug

10-14: ADD-ON OPTIONS FOR FIXTURE EQUIPMENT AND ADDITIONAL CONFIGURATIONS

NA = No Add On Equipment or Additional Configurations

EB2 = Two (2) 1/4-20 safety chain eye bolts - compatible with fixtures peripheral holes

EB4 = Four (4) 1/4-20 safety chain eye bolts - compatible with fixtures peripheral holes

SS = Additional 20KA Surge Suppression - (Only a Standard Voltage Unit Add-On option. 20KA is Standard with all High Voltage Units)

UG = Upper Gasketing - (Choose this option when using fixture in an outside mounting application - except for wallpack units)

S4 = Dust /Splashing Water Protected - (prevents ingress of dust sufficient to cause harm or water splashing from any angle)

PC = Photo Cell - (must specify 120, 240, 277, or 480v application when requesting quote or placing order)

MS = Motion / Occupancy Sensor (Industrial Grade)

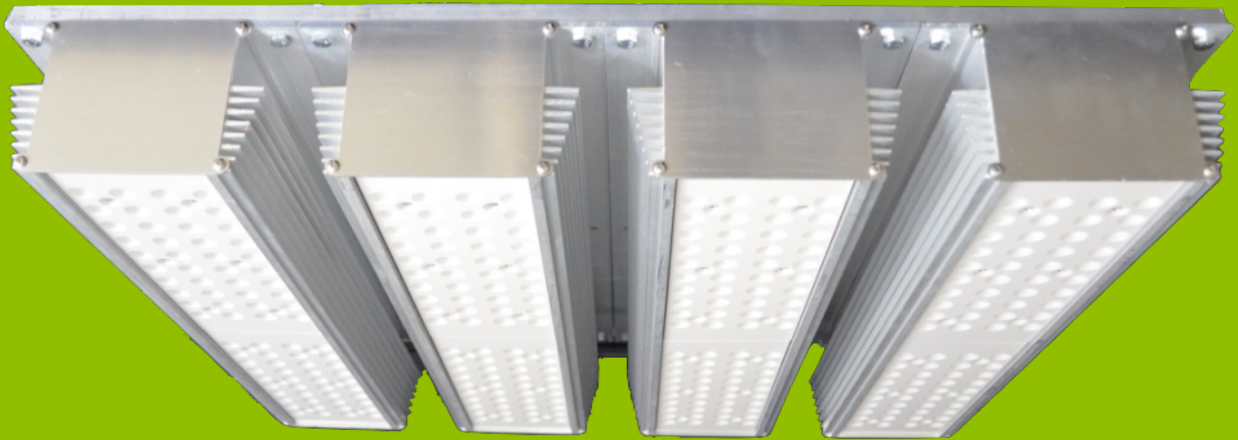
PB = Powder Coat Brown

PW = Powder Coat White

EC = External Control Capable (Please contact your local Glowble Sales Agent for control options and pricing)



glowble LIGHTING



Glowble Lighting

5850 Valley Road, Suite 80
Birmingham, AL 35235

www.glowblelighting.com

