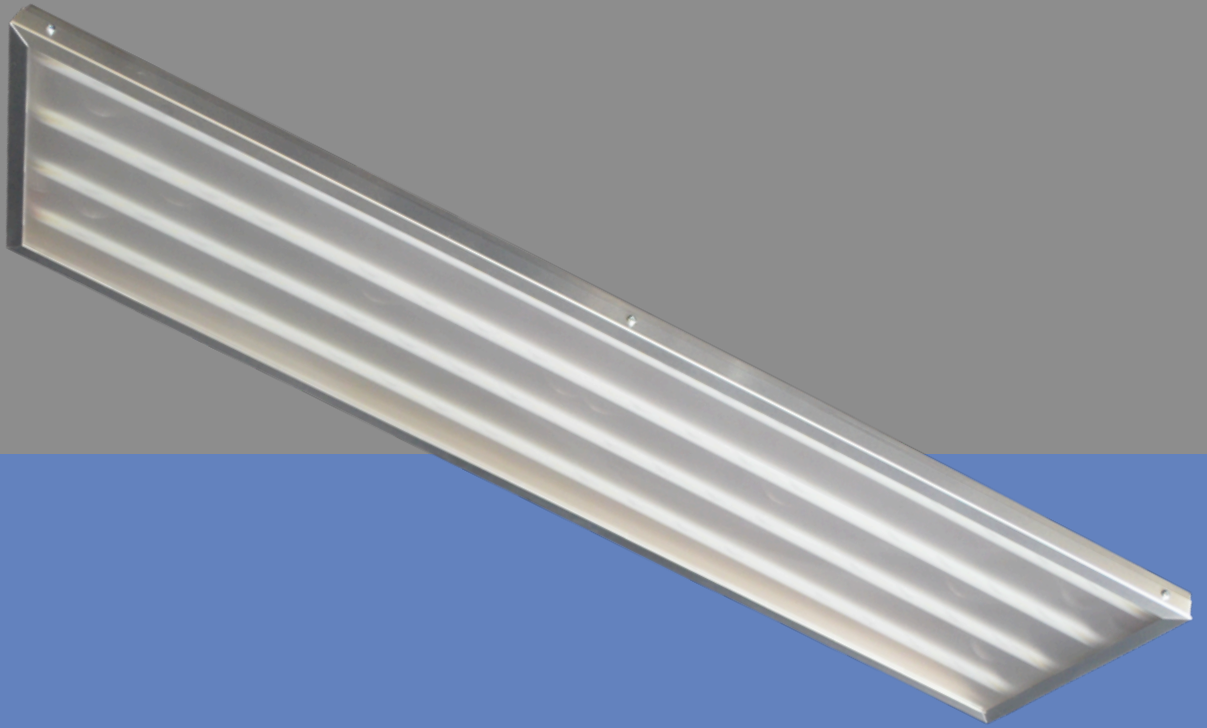




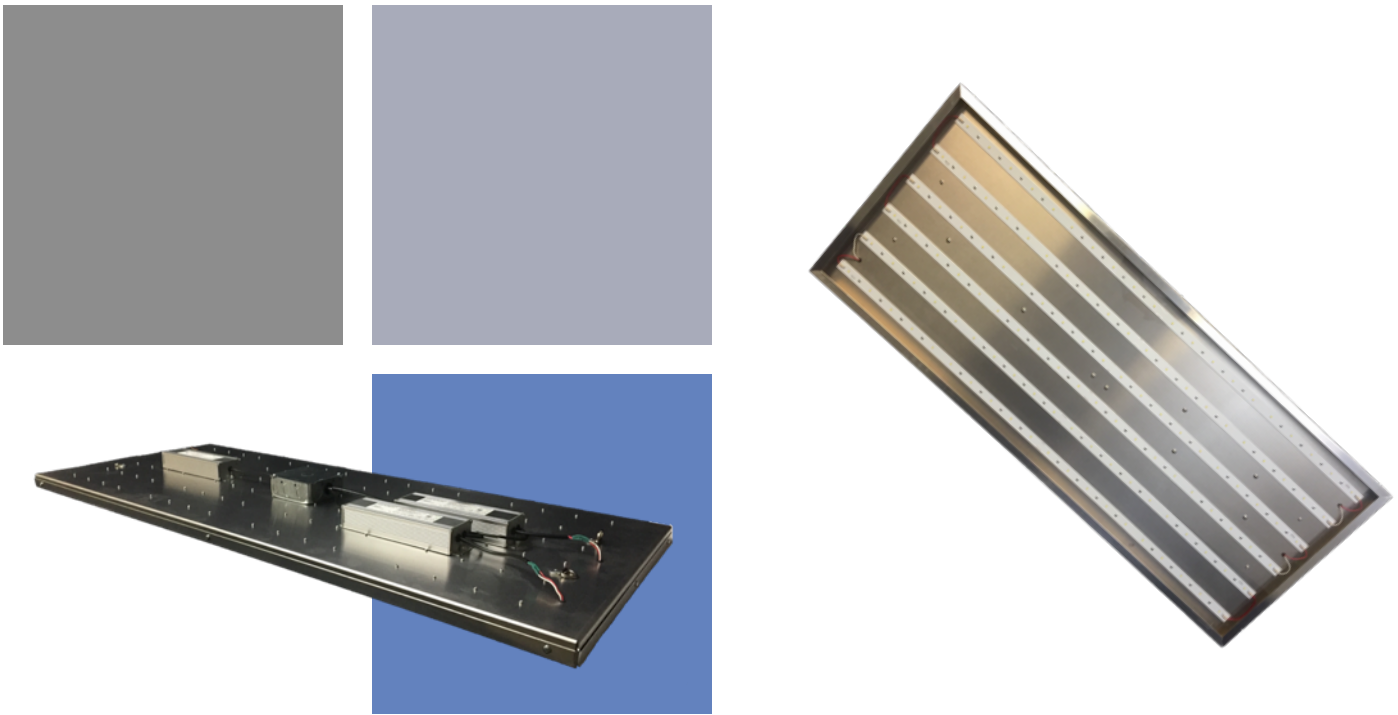
glowble
LIGHTING



Commercial & Industrial


LS Series

LED Luminaires



Glowble LS Series:

Combining Quality Design and Affordability

The Glowble LS-Series Fixture are proudly designed, engineered, machined, assembled, and supported in the USA. 

Just like all of the other Glowble product families, the LS-Series is built with high quality components that are specifically engineered and designed to outperform and outlast most of the imported fixtures that are offered as market entry-level or mid-tier products.

When a customer buys a Glowble fixture they are buying a product that will achieve a great return on their investment (instead of being disappointed with fixture performance and lifetime just a few years after purchase.) Simply stated, Glowble fixtures are built to last.

The LS-Series comes in three different product Sizes: the LS-040, LS-080, and LS-120. Each of these sizes also comes in three different output configurations: Standard Output (“SO”), High Output (“HO”), and Extra-High Output (“XHO”). Customers can choose any combination of these offering to get a reasonably priced fixture that best fits their budget or the demands of their operational environment.

Glowble has a history and reputation for offering LED fixtures that are excellent performers in rugged and hot conditions. The LS-Series continues that tradition with its:

- Standard Shatterproof Polycarbonate Lens
- All-Aluminum Housing that acts as a giant heat-sink
- Externally mounted IP67 rated Power Drivers with quick change connections and mounts
- Rating to operate in ambient temperatures from -40°F/-40°C up to +*199°F/92°C
(*dependent upon the output configuration chosen, and pro-rated warranty schedule)

Certified For Performance:

Glowble LS Series fixtures have been subjected to 3rd party testing and certification to validate the incredible performance you will receive. Glowble LS Series fixtures have been tested by UL and have received their certification as compliant to the following North American safety standards:

- UL8750
- UL1598
- CSA C22.2 #250 standard

While many off-shore production facilities have imbedded test facilities, Glowble chooses to use 3rd party. Often, there are energy savings rebates available to end users who upgrade from conventional lighting products to LED fixtures. DLC classification is typically a qualifying factor for those offering rebates. Glowble LS Series fixtures have applied for DLC Classification - which is pending. Based upon all LS products



having a total system efficacy of at least 120 lumens/watt or higher, DLC classification should be obtained.

Glowble is proud to state that all of our fixtures are designed, machined, and assembled in the USA and are RoHS compliant.



made in the USA
with US & imported parts





LS Series LED Fixtures:

Quality and Performance that outshines imported LED Fixtures

As the commercial and industrial LED markets continue to mature, several different levels of fixtures have filled the market. Some users choose to purchase lower quality and lower efficiency imported fixtures. Others want the most durable and energy efficient fixtures available. At Glowble Lighting, we believe that we have covered the top end of the market with our EF-Series. We wanted to also provide a great “middle of the market” high bay industrial LED fixture that does not compromise on the quality of components. We believe that the Glowble LS Series fixtures achieve this goal. This is an American made product with an attention to performance that most imported fixtures bypass or overstate.

Glowble lighting was one of the first producers of LED fixtures in the commercial and industrial marketplace, so we want to build lights that last. While many manufacturers are offering lesser-priced imported fixtures, often component quality is overlooked. When this occurs, failure rates increase and the end user has a negative experience. At

Glowble, we have stringent guidelines for our fixtures and the LS series is no exception. All LEDs used by Glowble must conform to very specific guidelines prior to being installed in our products and our light engine boards are populated in the US at our ISO 9000 compliant facility. This attention to component detail and quality create product light output consistency for the life of the fixture (80% or > Lumen Maintenance at 100,000 hours of operation which is equivalent to 11.4 years continuously.) Glowble stands behind our quality guarantee by offering a 10-year warranty on the fixture light engine and housing, and a 7-year warranty on the drivers. Many import fixtures only offer 5 year warranties at best. At Glowble we realize that customers want to maximize their return on investment (ROI) when upgrading their lighting systems. Based upon our LS Series design we believe that our products will return the best ROI of any commercial and industrial LED products you consider.

Built to Meet Your Specific Need:

Glowble LS Series fixtures are designed to meet your specific need for your unique application. Because the LS Series LED lighting is a versatile platform, we can configure our product to your specific need. You tell us the application, how much light you want in a specific area, and we can help you get the best lighting solution possible. We have a full array of IES files that we can either provide to you or calculate for you, which shows how the best LS Series configuration will perform in your application.

Glowble LS Series fixtures are also available for order with the following additional options:

- 0-10V Dimming capabilities (Standard)
- Photo Cells for Light Harvesting
- External Control Option including Wi-Fi and Cellular Network Control
- Diffusing Lens Insert

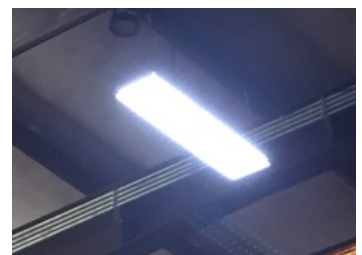
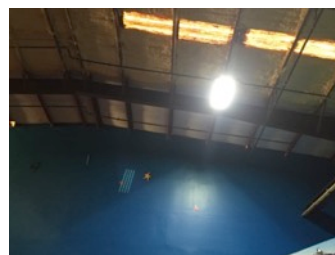
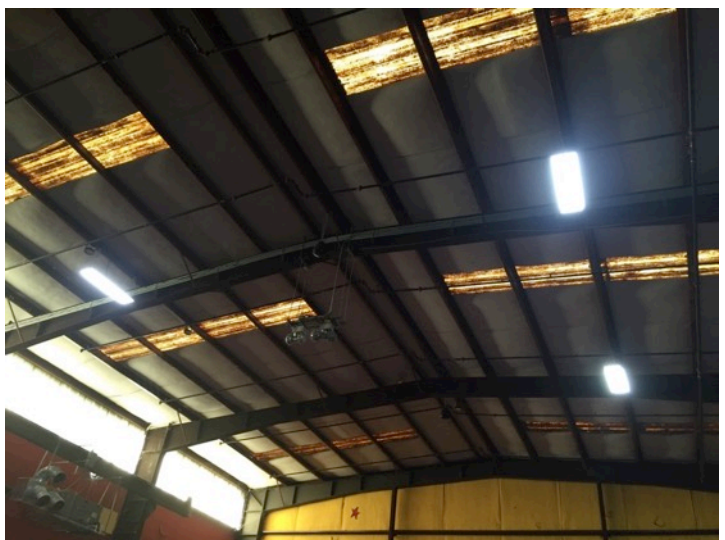
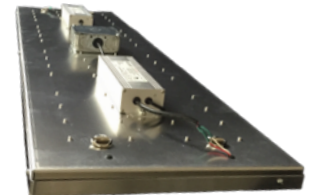
When it is time to install the product, don't worry; we have you covered there as well. Glowble LS Series LED fixtures can be configured at the factory to be ready for instant installation on sight. Options that we can customize for you include:

- Cord Length and Plug (if needed)
- Standard D-Rings for easy hanging
- Standard Center Mounted Junction Box with Knockout for Quick Pendant Mounting
- Custom Mount Design (when feasible)

Glowble LS-Series Lights at Work:

Industry Applications include:

- Steel Mills and Foundries
- Major Automotive Manufacturers and Associated Tier Suppliers
- Municipal, Commercial, & Retail Parking Decks
- Power Generation Facilities, Crew Quarters and Sub-Stations
- Military Bases
- Cold Storage Facilities
- Heat Treating Facilities
- Food Processing Plants
- Poultry Farms
- Fast Food Industry
- School and Athletic Facilities
- Various Industrial Manufacturing Facilities & Exterior Lighting
- Various Commercial Warehouse Facilities



Glowble LS Series LED Fixtures

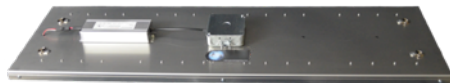
Model Options:



LS-040SO



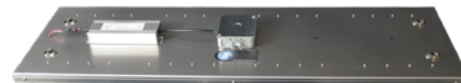
Shown with Diffused Lens Option



LS-040HO



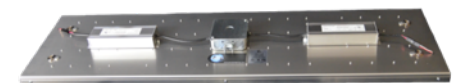
Shown with Diffused Lens Option



LS-00XH:O



Shown with Diffused Lens Option



LS-040SO

- Great for Low to Medium Height lighting needs in Industrial Manufacturing, Warehouses, and Retail Areas. Suggested mounting height range of 10 to 25ft.
- Replaces a traditional 250W MH and only uses 90 Watts of Power
- Produces a minimum of 12,000 Lumens at ambient temperatures from -40°C up to 150°F
- Average Life Expectancy of up to 100,000 hours
- Light Color: 5,500 Kelvin (±100)
- 10-year warranty on Light Engines
7-year warranty on Drivers
- Dimensions: 13"W x 47"L x 3"H;
Weight: 14lbs
- Input voltage of 85-305 & 4KA
Suppression or 347-510 & 20KA
Suppression; Vac 50/60 Hz
- .98 Minimum Input Power Factor

LS-040HO

- Great for Low to Medium Height lighting needs in Industrial Manufacturing, Warehouses, and Retail Areas. Suggested mounting height range of 15 to 35ft.
- Replaces a traditional 400W MH and only uses 130 Watts of Power
- Produces a minimum of 16,000 Lumens at ambient temperatures from -40°C up to 150°F
- Average Life Expectancy of up to 100,000 hours
- Light Color: 5,500 Kelvin (±100)
- 10-year warranty on Light Engines
7-year warranty on Drivers
- Dimensions: 13"W x 47"L x 3"H;
Weight: 14lbs
- Input voltage of 85-305 & 4KA
Suppression or 347-510 & 20KA
Suppression; Vac 50/60 Hz
- .98 Minimum Input Power Factor

LS-080SO

- Great for Medium Height Lighting needs in Industrial Manufacturing, Warehouses, and Retail Areas. Suggested mounting height range of 20 to 45ft.
- Replaces a traditional 400W MH and only uses 180 Watts of Power
- Produces a minimum of 24,000 Lumens at ambient temperatures from -40°C up to 150°F
- Average Life Expectancy of up to 100,000 hours
- Light Color: 5,500 Kelvin (±100)
- 10-year warranty on Light Engines
7-year warranty on Drivers
- Dimensions: 13"W x 47"L x 3"H;
Weight: 18lbs
- Input voltage of 85-305 & 4KA
Suppression or 347-510 & 20KA
Suppression; Vac 50/60 Hz
- .98 Minimum Input Power Factor

Glowble LS Series LED Fixtures

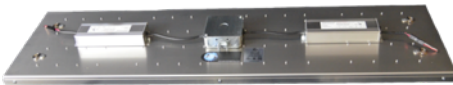
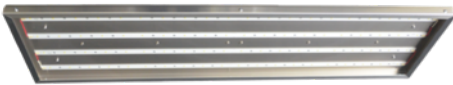
Model Options:



LS-080HO



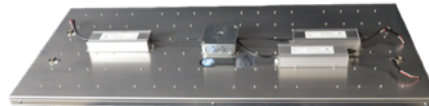
Shown with Diffused Lens Option



LS-120SO



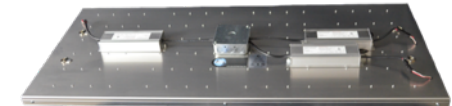
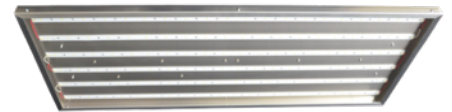
Shown with Diffused Lens Option



LS-120HO



Shown with Diffused Lens Option



LS-080HO

- Great for Medium Height Lighting needs in Industrial Manufacturing, Warehouses, and Retail Areas. Suggested mounting height range of 25 to 60ft.
- Replaces a traditional 400W MH and only uses 265 Watts of Power
- Produces a minimum of 32,000 Lumens at ambient temperatures from -40°C up to 150°F
- Average Life Expectancy of up to 100,000 hours
- Light Color: 5,500 Kelvin (±100)
- 10-year warranty on Light Engines 7-year warranty on Drivers
- Dimensions: 13"W x 47"L x 3"H; Weight: 18lbs
- Input voltage of 85-305 & 4KA Suppression or 347-510 & 20KA Suppression; Vac 50/60 Hz
- .98 Minimum Input Power Factor

LS-120SO

- Great for High Height Lighting needs in Industrial Manufacturing, Warehouses, and Retail Areas. Suggested mounting height range of 30 to 80ft.
- Replaces a traditional 1,000W MH and only uses 265 Watts of Power
- Produces a minimum of 36,000 Lumens at ambient temperatures from -40°C up to 150°F
- Average Life Expectancy of up to 100,000 hours
- Light Color: 5,500 Kelvin (±100)
- 10-year warranty on Light Engines 7-year warranty on Drivers
- Dimensions: 19"W x 47"L x 3"H; Weight: 25lbs
- Input voltage of 85-305 & 4KA Suppression or 347-510 & 20KA Suppression; Vac 50/60 Hz
- .98 Minimum Input Power Factor

LS-120HO

- Great for High Height Lighting needs in Industrial Manufacturing, Warehouses, and Retail Areas. Suggested mounting height range of 35 to 100ft.
- Replaces a traditional 1,000W MH and only uses 395 Watts of Power
- Produces a minimum of 48,000 Lumens at ambient temperatures from -40°C up to 150°F
- Average Life Expectancy of up to 100,000 hours
- Light Color: 5,500 Kelvin (±100)
- 10-year warranty on Light Engines 7-year warranty on Drivers
- Dimensions: 19"W x 47"L x 3"H; Weight: 25lbs
- Input voltage of 85-305 & 4KA Suppression or 347-510 & 20KA Suppression; Vac 50/60 Hz
- .98 Minimum Input Power Factor

LS-Series Operating Characteristics Versus Ambient Temperature

AMBIENT TEMPERATURE IN °F/°C		LS-040			LS-080			LS-120		
		SO	HO	XHO	SO	HO	XHO	SO	HO	XHO
-40°F/-40°C	Lumen Multiplier	115.5%	115.5%	115.5%	115.5%	115.5%	115.5%	115.5%	115.5%	115.5%
	Total Lumens	13,860	18,480	21,730	27,700	36,940	44,550	41,560	55,410	67,370
	Lumens/Watt	154	142	116	153	139	119	156	140	120
30°F/-1°C	Lumen Multiplier	110.2%	110.2%	110.2%	110.2%	110.2%	110.2%	110.2%	110.2%	110.2%
	Total Lumens	13,220	17,630	20,730	26,430	35,250	42,500	39,660	52,870	64,270
	Lumens/Watt	146	135	110	146	133	113	149	133	114
★ 77°F/25°C	Lumen Multiplier	106.3%	106.3%	106.3%	106.3%	106.3%	106.3%	106.3%	106.3%	106.3%
	Total Lumens	12,750	17,000	20,000	25,500	34,000	41,000	38,250	51,000	62,000
	Lumens/Watt	141	130	106	141	128	109	144	129	110
90°F/32°C	Lumen Multiplier	105.4%	105.4%	105.4%	105.4%	105.4%	105.4%	105.4%	105.4%	105.4%
	Total Lumens	12,640	16,860	19,830	25,280	33,710	40,650	37,930	50,570	61,470
	Lumens/Watt	140	129	106	140	127	108	143	128	109
100°F/38°C	Lumen Multiplier	104.4%	104.4%	104.4%	104.4%	104.4%	104.4%	104.4%	104.4%	104.4%
	Total Lumens	12,520	16,700	19,640	25,040	33,390	40,270	37,570	50,090	60,890
	Lumens/Watt	139	128	105	139	126	107	141	126	108
110°F/43°C	Lumen Multiplier	103.7%	103.7%	103.7%	103.7%	103.7%	103.7%	103.7%	103.7%	103.7%
	Total Lumens	12,440	16,590	19,510	24,870	33,170	40,000	37,320	49,750	60,480
	Lumens/Watt	138	127	104	138	125	107	140	125	108
XHO ✓ *115°F/43°C	Lumen Multiplier	103.1%	103.1%	103.1%	103.1%	103.1%	103.1%	103.1%	103.1%	103.1%
	Total Lumens	12,370	16,490	19,400	24,730	32,980	39,770	37,100	49,460	60,130
	Lumens/Watt	137	126	103	137	124	106	140	125	107
*120°F/49°C	Lumen Multiplier	102.7%	102.7%	102.7%	102.7%	102.7%	102.7%	102.7%	102.7%	102.7%
	Total Lumens	12,320	16,430	19,320	24,630	32,850	39,610	36,960	49,270	59,900
	Lumens/Watt	136	126	103	136	123	106	139	124	106
HO ✓ *125°F/49°C	Lumen Multiplier	102.3%	102.3%	102.3%	102.3%	102.3%	102.3%	102.3%	102.3%	102.3%
	Total Lumens	12,270	16,360	19,250	24,540	32,720	39,460	36,810	49,080	59,670
	Lumens/Watt	136	125	102	136	123	105	138	124	106
*130°F/54°C	Lumen Multiplier	102.0%	102.0%	102.0%	102.0%	102.0%	102.0%	102.0%	102.0%	102.0%
	Total Lumens	12,240	16,320	19,190	24,460	32,620	39,340	36,700	48,930	59,490
	Lumens/Watt	136	125	102	135	123	105	138	123	106
*135°F/54°C	Lumen Multiplier	101.5%	101.5%	101.5%	101.5%	101.5%	101.5%	101.5%	101.5%	101.5%
	Total Lumens	12,180	16,240	19,100	24,340	32,460	39,150	36,520	48,690	59,200
	Lumens/Watt	135	124	102	135	122	104	137	123	105
*140°F/60°C	Lumen Multiplier	101.0%	101.0%	LS-XHO Series Not Rated for these Ambient Temps	101.0%	101.0%	LS-XHO Series Not Rated for these Ambient Temps	101.0%	101.0%	LS-XHO Series Not Rated for these Ambient Temps
	Total Lumens	12,120	16,160		24,220	32,300		36,340	48,450	
	Lumens/Watt	134	124	LS-HO Series Not Rated for these Ambient Temps	134	121	LS-HO Series Not Rated for these Ambient Temps	137	122	LS-HO Series Not Rated for these Ambient Temps
SO ✓ *150°F/65°C	Lumen Multiplier	100.0%	100.0%		100.0%	100.0%		100.0%	100.0%	
	Total Lumens	12,000	16,000	LS-HO Series Not Rated for these Ambient Temps	23,990	31,990	LS-HO Series Not Rated for these Ambient Temps	35,990	47,980	LS-HO Series Not Rated for these Ambient Temps
	Lumens/Watt	133	123		133	120		135	121	
*160°F/71°C	Lumen Multiplier	99.3%	LS-HO Series Not Rated for these Ambient Temps	LS-HO Series Not Rated for these Ambient Temps	99.3%	LS-HO Series Not Rated for these Ambient Temps	LS-HO Series Not Rated for these Ambient Temps	99.3%	LS-HO Series Not Rated for these Ambient Temps	LS-HO Series Not Rated for these Ambient Temps
	Total Lumens	11,910			23,820			35,730		
	Lumens/Watt	132	LS-HO Series Not Rated for these Ambient Temps	LS-HO Series Not Rated for these Ambient Temps	132	LS-HO Series Not Rated for these Ambient Temps	LS-HO Series Not Rated for these Ambient Temps	134	LS-HO Series Not Rated for these Ambient Temps	LS-HO Series Not Rated for these Ambient Temps
*170°F/76°C	Lumen Multiplier	98.3%			98.3%			98.3%		
	Total Lumens	11,790	LS-HO Series Not Rated for these Ambient Temps	LS-HO Series Not Rated for these Ambient Temps	23,580	LS-HO Series Not Rated for these Ambient Temps	LS-HO Series Not Rated for these Ambient Temps	35,370	LS-HO Series Not Rated for these Ambient Temps	LS-HO Series Not Rated for these Ambient Temps
	Lumens/Watt	131			131			133		
*180°F/82°C	Lumen Multiplier	97.5%	LS-HO Series Not Rated for these Ambient Temps	LS-HO Series Not Rated for these Ambient Temps	97.5%	LS-HO Series Not Rated for these Ambient Temps	LS-HO Series Not Rated for these Ambient Temps	97.5%	LS-HO Series Not Rated for these Ambient Temps	LS-HO Series Not Rated for these Ambient Temps
	Total Lumens	11,700			23,390			35,090		
	Lumens/Watt	130	LS-HO Series Not Rated for these Ambient Temps	LS-HO Series Not Rated for these Ambient Temps	129	LS-HO Series Not Rated for these Ambient Temps	LS-HO Series Not Rated for these Ambient Temps	132	LS-HO Series Not Rated for these Ambient Temps	LS-HO Series Not Rated for these Ambient Temps
*190°F/87°C	Lumen Multiplier	96.6%			96.6%			96.6%		
	Total Lumens	11,590	LS-HO Series Not Rated for these Ambient Temps	LS-HO Series Not Rated for these Ambient Temps	23,170	LS-HO Series Not Rated for these Ambient Temps	LS-HO Series Not Rated for these Ambient Temps	34,760	LS-HO Series Not Rated for these Ambient Temps	LS-HO Series Not Rated for these Ambient Temps
	Lumens/Watt	128			128			131		
*200°F/93°C	Lumen Multiplier	95.7%	LS-HO Series Not Rated for these Ambient Temps	LS-HO Series Not Rated for these Ambient Temps	95.7%	LS-HO Series Not Rated for these Ambient Temps	LS-HO Series Not Rated for these Ambient Temps	95.7%	LS-HO Series Not Rated for these Ambient Temps	LS-HO Series Not Rated for these Ambient Temps
	Total Lumens	11,480			22,950			34,440		
	Lumens/Watt	127	LS-HO Series Not Rated for these Ambient Temps	LS-HO Series Not Rated for these Ambient Temps	127	LS-HO Series Not Rated for these Ambient Temps	LS-HO Series Not Rated for these Ambient Temps	129	LS-HO Series Not Rated for these Ambient Temps	LS-HO Series Not Rated for these Ambient Temps

Performance in High Temp Environments:

Environmental ambient temperatures matter and can greatly affect a light fixture's performance as well as the anticipated lifetime.

Glowble has three different configurations for every LS-Series category (SO, HO, and XHO) that allows the end-user to select the best fixture that will provide the needed performance for their specific situation.

In the chart below, you can see how each one of the configurations would perform in your specific environment.

- The SO configured fixtures carry a 10-Year/7-Year Light Engine and Driver Limited Warranty when exposed to ambient operational temperatures ≤ 150°F/65°C.
- The HO configured fixtures carry a 5-Year Limited Warranty on the fixture and all components when exposed to ambient operational temperatures ≤ 125°F/52°C.
- The XHO configured fixtures carry a 5-Year Limited Warranty on the fixture and all components when exposed to ambient operational temperatures ≤ 115°F/43°C.

The green check marks above and the corresponding data in the green boxes indicate the highest level of ambient temperature in which the fixture would maintain a 100% limited warranty at the levels mentioned in the section above. Glowble also pro-rates the warranty when these ambient temperatures are exceeded up to a certain limit. A schedule of those limits and the corresponding warranty levels are in the chart below:

Quick Reference Guide

At Glowble we realize that finding the best fixture for your specific application is important. When trying to figure out which Glowble LS Series fixture is right for you, we find that the matrix provided below can help point you in the right direction and gives a starting point as you head toward your custom built fixture for your specific application.

Glowble Lighting

LS Series Fixture Quick Reference Guide



Traditional Fixture Replacement	Glowble LS-Series Fixture Type	Input Power In Watts	Suggested Hanging Height Range in Ft.	Light Output in Lumens (at 150°F Ambient Temp.)	Lumens Per Watt: Total System Efficacy	Light Color Temp. in Kelvins	Exterior Dimensions	Approx. Weight in Pounds	Avg. Life Expectancy in Hours
250W MH	LS-040SO	90	10-25	12,000	133	5,500	13"W x 47"L x 3"H	14	100,000
400W MH	LS-040HO	130	15-35	16,000	123	5,500	13"W x 47"L x 3"H	14	100,000
400W MH	LS-080SO	180	20-45	24,000	133	5,500	13"W x 47"L x 3"H	18	100,000
400W MH	LS-080HO	265	25-60	32,000	120	5,500	13"W x 47"L x 3"H	18	100,000
1000W MH	LS-120SO	265	30-80	36,000	135	5,500	19"W x 47"L x 3"H	25	100,000
1000W MH+	LS-120HO	395	35-100	48,000	121	5,500	19"W x 47"L x 3"H	25	100,000

Let us help you build the best fixture possible for your application:

Once you have used the above guide please contact your local Glowble Lighting Distributor to start the process of getting the best configuration possible for your application. To further qualify potential fixtures for your applications please refer to our easy to use Foot-Candle Reference Guide on the next page.

Foot-Candle Reference Guide

Many times figuring out which fixture to use can be a multi-step process. Glowble wants to help make this process as easy as possible. We have developed a Foot-Candle Reference Guide in addition to our Quick Reference Guide that can help assist you in selecting the best product for your application. The Guide will give you an idea of the actual foot-candle that will exist at floor level using any specific fixture at the different pre-designated grid configurations and hanging heights. This guide is below.

Glowble LS-Series Estimated Foot Candle Chart																					
Grid Size Example Building Dimensions Total Example Building in Sq.Ft.	Fixture Name	Output Type	Hanging Height (in Feet)																		
			10'	15'	20'	25'	30'	35'	40'	45'	50'	60'	70'	80'	90'	100'	110'	120'			
10' x 10' 100' x 100' 10,000 Sq.Ft.	LS-040	SO	103	96	89	84	78	74	69	65	62	56	50								
	LS-040	HO					100	94	89	84	79	71	64	58	53	49					
	LS-040	XHO										108	97	88	81	74	69	64			
15' x 15' 100' x 100' 10,000 Sq.Ft.	LS-040	SO	50	47	44	41	38	36	34	32	30	27									
	LS-040	HO	64	60	56	52	49	46	43	41	39	35	31	29							
	LS-040	XHO	101	94	87	81	76	71	66	63	59	53	48	43	40	36	34	31			
	LS-080	SO	102	95	89	83	78	73	68	65	61	55	49	45	41	38	35	33			
	LS-080	HO					102	95	90	85	80	72	65	59	54	50	46	43			
	LS-080	XHO										101	91	83	76	70	65	60			
20' x 20' 100' x 100' 10,000 Sq.Ft.	LS-040	SO	26	24	2	21	20	18	17												
	LS-040	HO	33	31	29	27	25	24	22	21	20										
	LS-040	XHO	52	48	44	41	39	36	34	32	30	27	24	22	20						
	LS-080	SO	52	48	45	42	40	37	35	33	31	28	25	23	21						
	LS-080	HO	68	63	59	55	52	49	46	43	41	37	33	30	27	25	23	22			
	LS-080	XHO	98	91	85	79	74	69	65	61	58	52	47	42	39	36	33	31			
	LS-120	SO	79	74	69	64	60	56	53	50	47	42	38	35	32	29	27	25			
	LS-120	HO	104	97	91	85	79	74	70	66	62	56	50	46	42	39	36	33			
	LS-120	XHO						104	98	92	87	78	70	64	59	54	50	46			
25' x25' 200' x 200' 40,000 Sq.Ft.	LS-040	SO	18	17	16	16	15														
	LS-040	HO	22	22	21	20	20	19	18												
	LS-040	XHO	36	34	33	32	31	30	28	27	26	25	23	22	20	19					
	LS-080	SO	36	34	33	32	31	30	29	28	27	25	23	22	20	19	18	17			
	LS-080	HO	47	45	44	42	41	39	38	37	35	33	31	29	28	26	25	23			
	LS-080	XHO	68	65	63	60	58	56	54	52	50	47	44	42	39	37	35	33			
	LS-120	SO	54	53	51	49	47	46	44	43	41	38	36	34	32	30	29	27			
	LS-120	HO	72	69	67	64	62	60	58	56	54	51	48	45	42	40	38	36			
	LS-120	XHO	103	99	95	91	88	85	82	79	76	71	67	63	59	56	53	50			
30' x30' 200' x 200' 40,000 Sq.Ft.	LS-040	HO	16	16	15	15	15	14													
	LS-040	XHO	25	25	24	24	23	22	22	21	20	19	18	17							
	LS-080	SO	25	25	24	24	23	23	22	22	21	20	19	18							
	LS-080	HO	33	32	32	31	30	30	29	28	28	26	25	24	23	22	21	20			
	LS-080	XHO	48	47	46	45	44	42	41	40	39	38	36	34	33	31	30	29			
	LS-120	SO	39	38	37	36	35	34	34	33	32	31	29	28	27	26	25	24			
	LS-120	HO	51	50	49	47	46	45	44	43	42	40	39	37	35	34	32	31			
	LS-120	XHO	73	71	69	68	66	64	63	61	60	57	54	52	50	47	45	44			
Max Ambient Operational Temperature for SO Fixtures: 150°F			10' X 10' Grid - SO				15' X 15' Grid - SO				20' X 20' Grid - SO				25' X 25' Grid - SO				30' X 30' Grid - SO		
Max Ambient Operational Temperature for HO Fixtures: 125°F			10' X 10' Grid - HO				15' X 15' Grid - HO				20' X 20' Grid - HO				25' X 25' Grid - HO				30' X 30' Grid - HO		
Max Ambient Operational Temperature for XHO Fixtures: 115°F			10' X 10' Grid - XHO				15' X 15' Grid - XHO				20' X 20' Grid - XHO				25' X 25' Grid - XHO				30' X 30' Grid - XHO		

Order a Custom Light for Your Specific Application:

Glowble LS Series LED Fixtures can be ordered in multiple combinations and options. For an explanation and demonstration of how to order the specific fixture you need please review the information below. Your Glowble Lighting Distributor stands ready to assist you in completing the part number specific to your needs.

Ordering Number Logic

Glowble LS Series

Part Identification Worksheet (PID Sheet)



Sample Completed Form for Demonstration Purposes:

LS	120	HO	SV	CL	36	TL	NA	---
----	-----	----	----	----	----	----	----	-----

Custom Build Your Needed LS Series Fixture(s) Below:

LS								
----	--	--	--	--	--	--	--	--

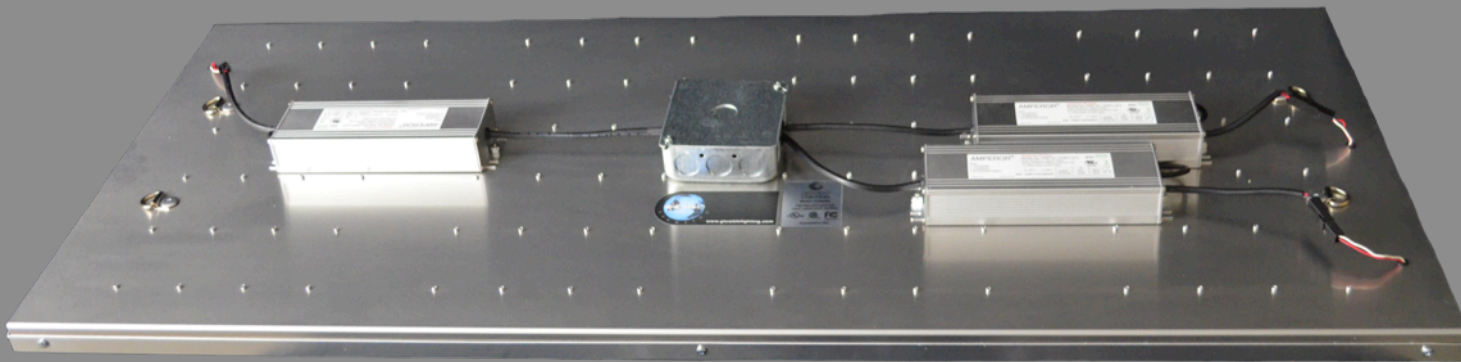
Series Category	LED Count	Driver Output Level	Driver Voltage Type	Fixture Lens Type	Fixture Power Cord Length in Inches	Fixture Plug Type	Fixture Add Ons	Additional Add Ons (If None Leave Blank)
LS	040 = 40 080 = 80 120 = 120	SO = Standard Output (750ma - Dimable) HO = High Output (1,050ma - Dimable)	SV = standard voltage (90-305v) HV = high voltage (347-510v)	CL = Clear Lens DL = Diffusing Lens Insert	36 = Standard length Power Cord - ($\leq 36"$ no additional cost) XXX = Number of Inches for Custom Length up to 96"	NP = No Plug TL = 15A Twistlock Plug must specify the voltage application (120,277, or 480) in the Special Notes Section Below TP = 15A Straight Plug	NA = No Add EC = External Control Capable MS = Motion Sensor (Industrial Grade) PC = Photo Cell (must specify 120, 240, 277, or 480v application in additional Add On Information /Special Notes section) SS = Additional 20KA Surge Supression	Please use this block to add an additional fixture Add On: (If None - Leave Blank)

Fixture Lumen Output Table:

LED Count & Driver Output Level Selected: (SO or HO)	Typically Replaces the Following Equivalent Metal Halide	Hanging Height Recommended Range	Total Lumen Output of Fixture	Fixture Total Power Consumption (in Watts)	Lumens / Watt Cree™ LEDs Used	Color Temperature in Kelvins ($\pm 100K$)	Total System Efficacy at 150°F Ambient Operating Temp (in Lumens/Watt)	Operational Ambient Temperature Range in °F	Lifetime Expectancy in Hours
040 - SO	250W MH	10-25ft	12,000	90	164	5,500	133	-40°F to 150°F	100,000
040 - HO	400W MH	15-35ft	16,000	130	164	5,500	123	-40°F to 150°F	100,000
080 - SO	400W MH	20-45ft	24,000	180	164	5,500	133	-40°F to 150°F	100,000
080 - HO	400W MH	25-60ft	32,000	265	164	5,500	120	-40°F to 150°F	100,000
120 - SO	400W MH	30-80ft	36,000	265	164	5,500	135	-40°F to 150°F	100,000
120 - HO	1,000W MH	35-100ft	48,000	395	164	5,500	121	-40°F to 150°F	100,000



glowble LIGHTING



Glowble Lighting

5850 Valley Road, Suite 80
Birmingham, AL 35235

www.glowblelighting.com

